

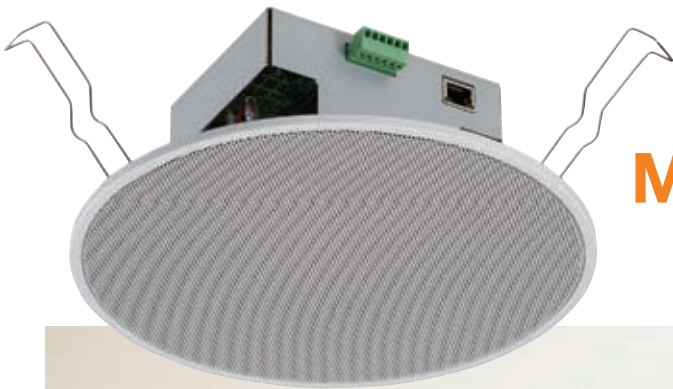


Sophisticated IP Audio Endpoints

IP-A1 Series



**Beyond
Audio
Communications**



More than meets the eye

All of these features are on board...



No, it's an
**Audio file
player.**

This is obviously a
Speaker.

Isn't it a
**Time
Scheduler?**

It must be an
Audio matrix!

IP-A1 series is a group of sophisticated IP audio endpoint devices which are designed in different forms. Although it looks like a simple speaker or an I/F box, it is capable of much more features than its appearance and performs as a minimal PA system even with a single device while multiple devices can also be managed as one controlled PA system.

01 What is IP-A1?

IP-A1 series consists of a variety of commercial-grade IP audio endpoints, which can be used as an independent audio system or a fully integrated audio communication system to be configured and operated in conjunction with external systems and platforms such as security video monitoring, access control, digital signage or fire alarm systems.



Common Key Features

Audio File Storage

MP3/WAV
80MB

Standard Protocols

SIP, Onvif
Multicast

Audio Management

Priority
&
Volume

Easy Configuration

Browser UI
&
Software

Integration Friendly

HTTP API
&
Contact In/Out

*Onvif is a registered trademark of ONVIF Inc.

Audio communication system design can be much simpler and more flexible with IP-A1 series

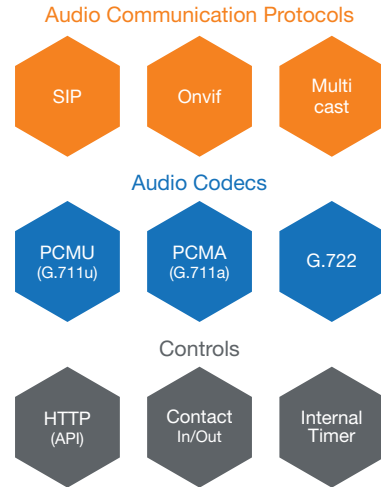
02 Why IP-A1?

Integration-friendly

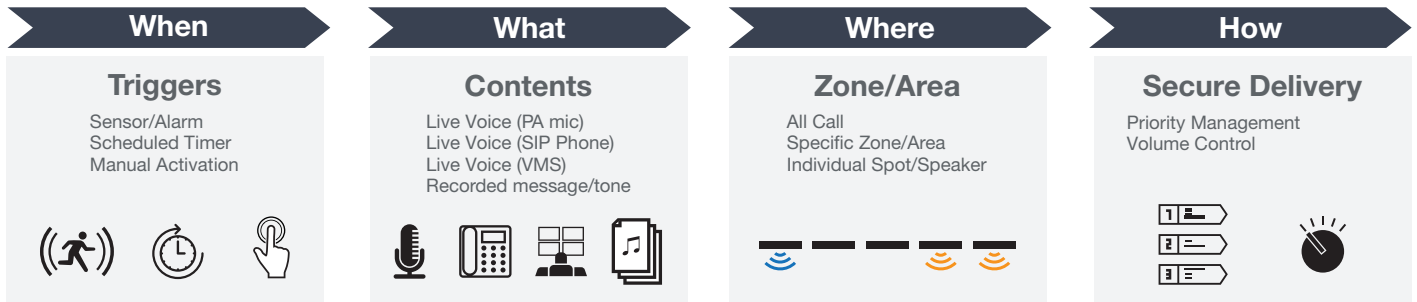
IP-A1 series IP endpoints adopt common industrial standard protocols for its audio communications and controls, which helps to establish fully integrated systems by communicating not only between IP-A1 series devices but also with external devices and platforms such as SIP phone, security VMS (Video Management Software), Access Control or Sensing systems. Adding an endpoint or group of endpoints into a commercial communication system brings it to the next level for being capable of flexible audio communications over the network.



IP-A1 can be the easiest “**piece**” to be added for fulfilling **Audio System** requirements in your integration project designs.



Key Elements of Audio Communications



IP-A1 series is designed to handle these elements flexibly for meeting every single project requirements.

Server-less & Scalable

IP-A1 series does not require a dedicated server for its operation in standalone mode, so that the system budget can be minimized. The simplest PA system can be established by a single endpoint device such as IP Horn Speaker, while a building wide or even community wide audio communication system can also be configured with a large number of endpoints designed in different forms.



Server



Spot Announcement



Large-scale Broadcast

03 Lineup

Transmitter

IP Remote Microphone
IP-A1RM



The IP-A1RM is an IP remote microphone, which can be used as a PA operation console to manage live voice announcements, playback recorded messages, quick recording and preview and other function activations.

Transmitter

IP Paging Gateway
IP-A1PG



The IP-A1PG is an IP paging gateway unit to convert SIP/ONVIF audio streaming signal, internal audio files or local input audio sources into Multicast streaming for organizing group/zone broadcasts. It also manages entire IP-A1 PA system with a variety of control functions.

Receiver

IP Audio Interface
IP-A1AF



The IP-A1AF is an IP audio interface that decodes IP audio streams into analog audio signals to be connected with an analog mixer or amplifier. It is also equipped with a built-in 15W amplifier to drive low-impedance speaker(s).

Receiver

IP Power Amplifier
IP-A1PA12



The IP-A1PA12 is an IP power amplifier that receives audio signals through network and drive high impedance (25/70/100V) speaker(s) with a built-in 12W amplifier which can be powered by PoE+ power source.

Receiver

IP Ceiling Speaker
IP-A1PC238



The IP-A1PC238 is an IP ceiling speaker with a built-in 8W amplifier which is designed to deliver clear voice announcements and music. It receives audio signals through network and an 80MB internal file storage is also available for 20 MP3/WAV format audio files.

Receiver

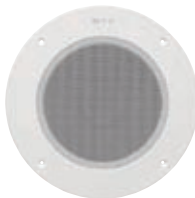
IP Horn Speaker
IP-A1SC15



The IP-A1SC15 is an IP66 rated IP paging horn speaker which is designed to deliver clear voice announcements in outdoor applications. It receives audio signals through network and an 80MB internal file storage is also available for 20 MP3/WAV format audio files.

Receiver

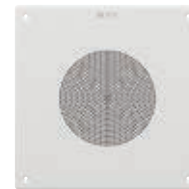
IP Ceiling Mount Speaker
IP-A1PC580R



The IP-A1PC580R is an IP ceiling speaker with a built-in 8W amplifier which is designed to deliver clear voice announcements and music. It receives audio signals through network and an 80MB internal file storage is also available for 20 MP3/WAV format audio files.

Receiver

IP Square Speaker
IP-A1PC580S



The IP-A1PC580S is an IP ceiling speaker with a built-in 8W amplifier which is designed to deliver clear voice announcements and music. It receives audio signals through network and an 80MB internal file storage is also available for 20 MP3/WAV format audio files.

Accessory

Microphone Panel
IP-A1MP



The IP-A1MP is an analog microphone panel that is equipped with an electret condenser microphone, a push button and a status indicator. It can be used in conjunction with IP-A1AF, IP-A1PC580R or IP-A1PC580S to initiate a call and establish two-way conversation.

Transmitter

Receiver

IP Horn Speaker
w/ Microphone

IP-SC15MC



The IP-SC15MC is a network horn speaker with a microphone, which can receive broadcasts initiated by other terminals or servers and supports device configuration through a web browser. The device is also IP66 rated and can withstand temperatures as low as -45 °C, making it ideal for outdoor use.

04 Key Broadcast Functions

Internal Audio File

ALL

- Up to 20 audio files (Total 80MB)
- MP3, WAV
- Volume level, Number of times to repeat and Interval can be specified.



Audio File Formats

WAV: 8/16/44.1/48 kHz sampling frequency, 8/16bit, mono/stereo
 MP3: 32/44.1/48 kHz sampling frequency, 64-320 kbps, CBR/VBR, mono/stereo

VMS Broadcast

AF PA12 PC238 SC15 PC580R/S

- Broadcasts can be made using Onvif Audio Backchannel protocol from VMS (Video Management System) software.



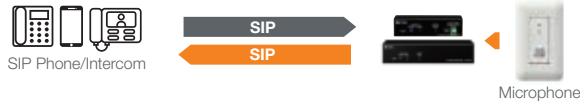
Compatible Audio Codecs

PCMU (G.711u)

2-way Communication

AF PA12 MP

- Audio back stream can be made for audio monitoring and/or conversation applications.



Audio Input (AF, PA12)

Audio Input: LINE/MIC (LINE: 0dB, MIC: -60dB), PAD, Phantom Power On/Off

SIP Broadcast

RM AF PA12 PC238 SC15 PC580R/S

- Broadcasts can be made using SIP protocol via SIP server.



Compatible Audio Codecs

G.722, PCMU (G.711u), PCMA (G.711a)

Multicast Streaming

ALL

- Up to 20 multicast addresses and ports can be managed and streamed between transmitter and receiver devices.
- Each receiving device is capable of 20 multicast ports.



Compatible Audio Codecs

G.722, PCMU (G.711u), PCMA (G.711a) – Auto codec recognition

Priority Management

ALL

- Broadcast priorities can be changed between broadcast types and patterns on each device.

IP-A1RM		IP-A1PG		Receiver	
Microphone	▲	SIP	▲	SIP	▲
Recorded Audio	23	VMS	23	VMS	▲
AUX	▼	Pattern 1-20	▼	Multicast 1-20	43
		LINE/MIC IN	▼	Pattern 1-20	▼
				Local	▼

Default Priorities (High to Low)

Default priorities are set as the above diagram shows.

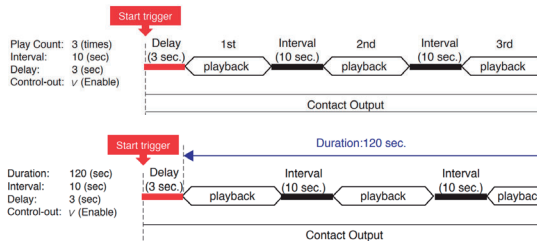
"Local" priority setting is available only on IP-A1AF and IP-A1PA12.

Broadcast Patterns

ALL

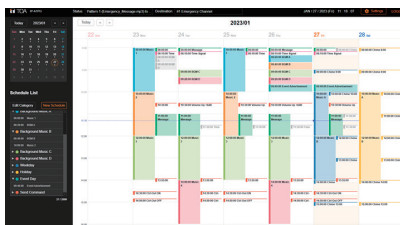
- Up to 20 Broadcast Patterns can be registered by using internal audio files.
- Play mode can be selected from two options (see right figure).

- Timer setting feature is available.



Play Count
 -Specify the number of times to repeat.
 -Specify Interval and Delay time.
 -Enable/disable control-out.

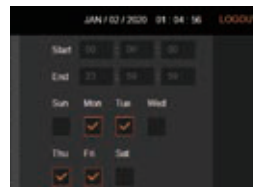
Duration
 -Specify the total duration time to repeat.
 -Specify Interval and Delay time.
 -Enable/disable control-out.



RM AF

Calendar Scheduler

-User-friendly GUI allows intuitive operations to manage up to 2,000 schedules.
 -Available on IP-A1RM and IP-A1PG.



AF PA12 PC238 SC15 PC580R/S

Weekly Timer

-Specify Start and End time to repeat.
 -Select applicable days.
 -Available on IP-A1AF, IP-A1PA12, IP-A1PC238.

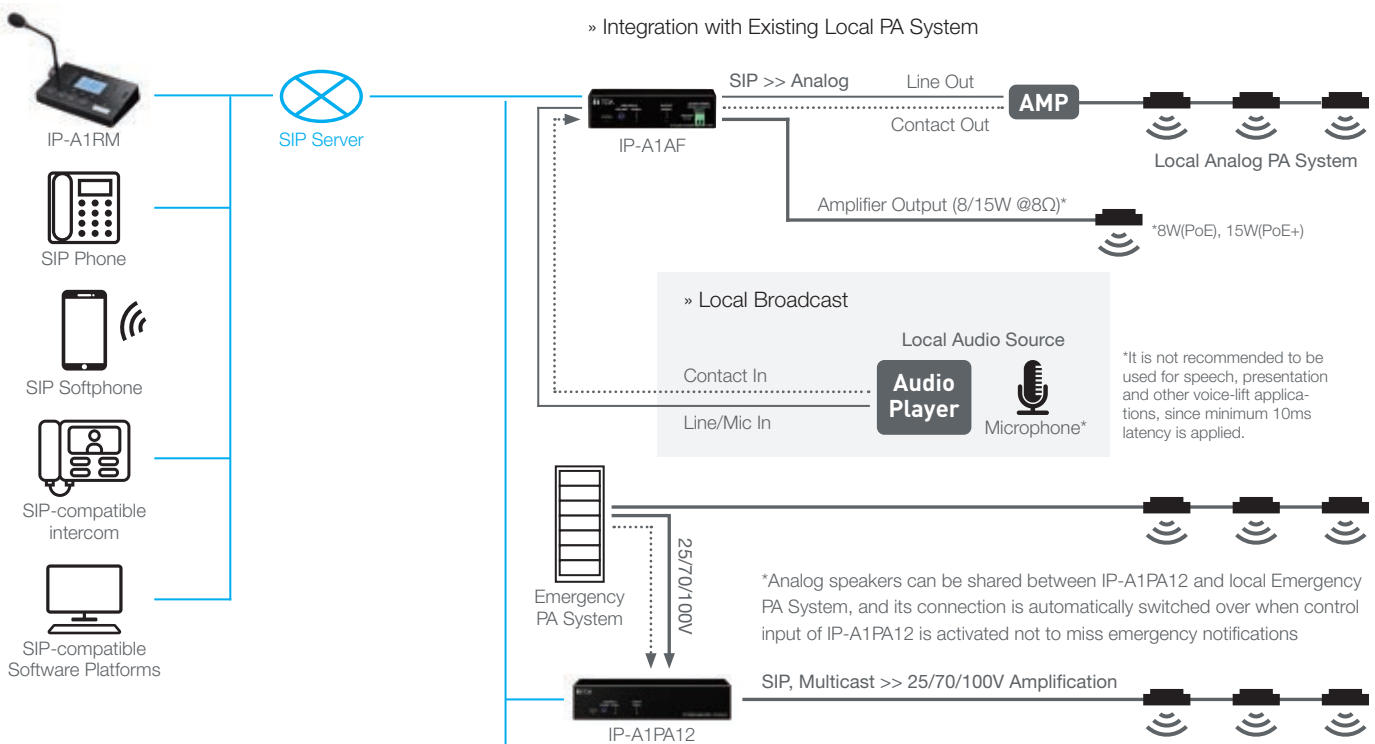
05 Applications

Minimal Standalone Operation

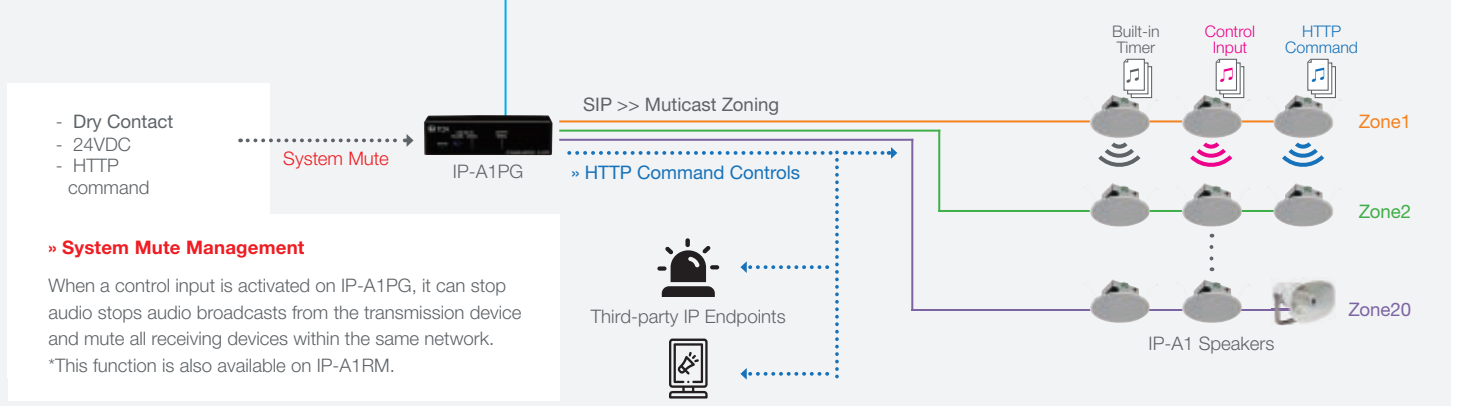


Sophisticated PA System Integrations

» Integration with Existing Local PA System



» Hybrid of Local Spot Broadcast & System-wide PA



» Integration with Microsoft Teams



*IP-A1PG required

This Teams integration can be achieved by using the optional middleware called "CyberGate for Intercom" provided by CyberTwice.

1. Broadcast from Teams to IP-A1

Live broadcasts can be made from Teams app through IP-A1 by using SIP protocol.

2. Multicast broadcast from Teams through IP-A1PG

Multicast port number can be specified to select a broadcast zone/area.

3. Calls from IP-A1 to Teams

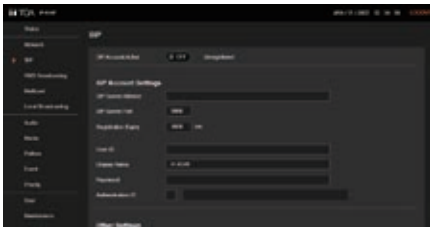
By connecting a microphone switch panel to the microphone and contact input of IP-A1AF/PC580R/PC580S, a call can be placed from the IP-A1 device to Teams for having a half-duplex conversation.

SIP Phone System Integrations

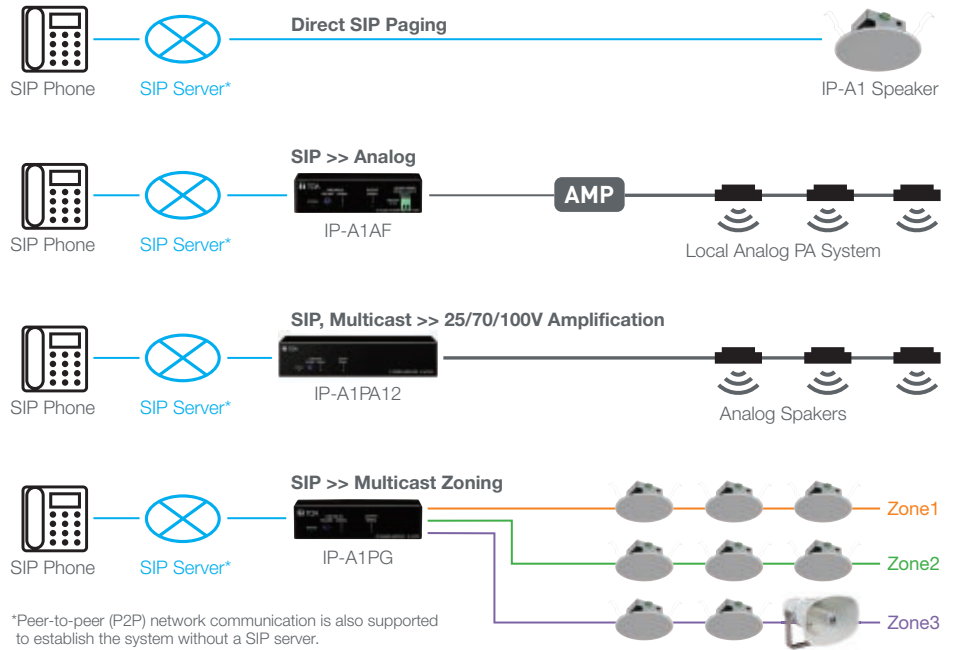
» As simple as adding a “Phone”



01 Dial 2-digit numbers (DTMF) to select Multicast channel/zone



IP-A1 Browser Interface
(SIP Account Setting Menu)



Security VMS Integrations

» As simple as adding a “Camera”

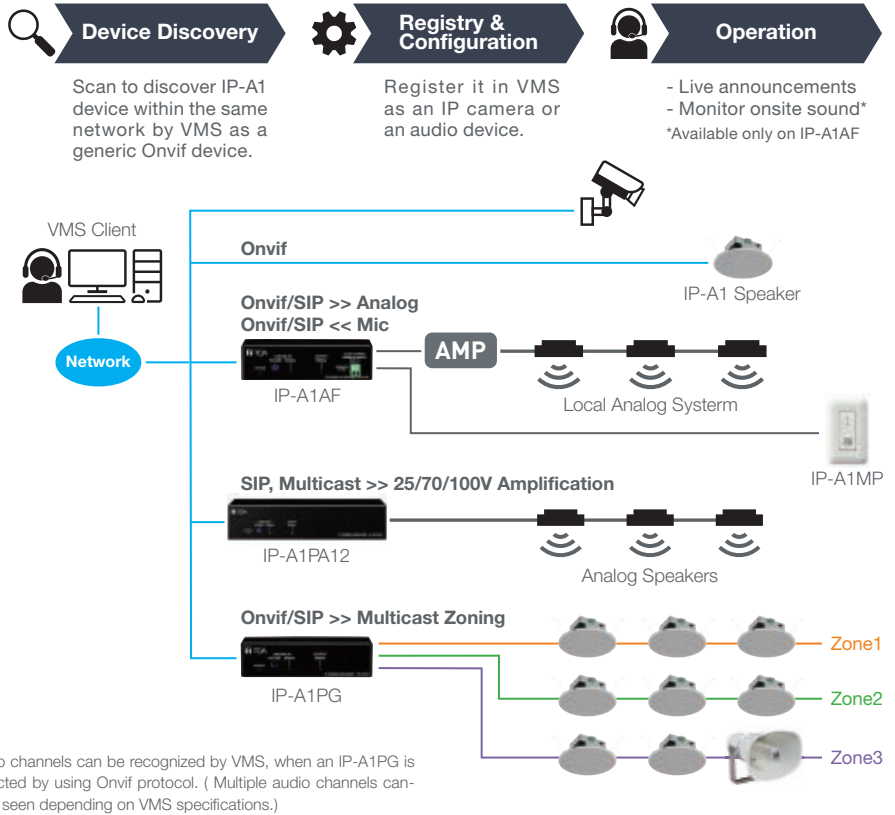


Live Voice Announcement

Audio Monitoring

Alert Automation

Motion Detection (Trigger Event) → HTTP Commands → Playback recorded message → Alert



IP-A1RM the **Operation Console** of IP-A1 Series

IP-A1RM is designed to be used by PA system operators as the main console of IP-A1 series. It manages live voice announcements, playback recorded messages, quick recording and preview, and other function activations.



*Optional wall mounting bracket WB-RM500 is required.

The below functions are also available as common features with IP-A1PG.

Multicast Zoning

System Mute

HTTP Command Distribution

Calendar Scheduler

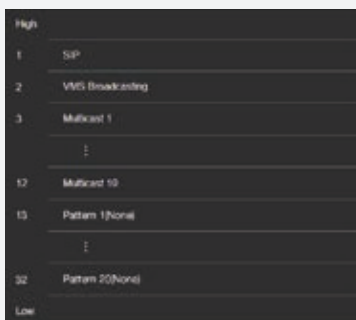
IP-A1PA12 IP-A1AF IP-A1PC238 IP-A1SC15 IP-A1PC580R IP-A1PC580S IP-SC15MC



Power source	PoE+	PoE+ / PoE	PoE	PoE+ / PoE	PoE	PoE	PoE+ / PoE
Audio Protocols 	✓	✓	✓	✓	✓	✓	✓
Audio Protocols 	✓	✓	✓	✓	✓	✓	✓
Two-way Communication (MIC Input)	✓	✓	-	-	✓	✓	✓
Audio Output	✓	✓	-	-	✓	✓	-
Audio Storage 	✓	✓	✓	✓	✓	✓	128MB MP3
Weekly Timer Triggering Broadcast Patterns	✓	✓	✓	✓	✓	✓	✓
Controls 	✓	✓	✓	✓	✓	✓	✓
Environmental Ratings	-	-	-	IP66	-	-	IP66
Plenum-rated (UL2043)	-	-	-	-	 When installed with HY-BC580U Back can	-	-
Other Back Can	-	-	BB-A1PC238	-	BB-580	Q-BB-580S	

» Priority Management

Broadcast priority can be flexibly configured on each endpoint device independently.



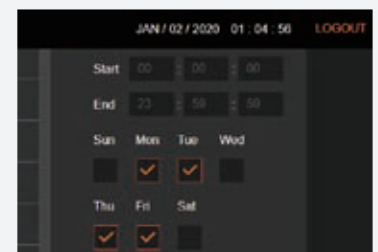
» Individual Volume Adjustment

Individual (Master and each Input) volume level can be flexibly adjusted to uniform the output level or set specific broadcasts at higher level intentionally.

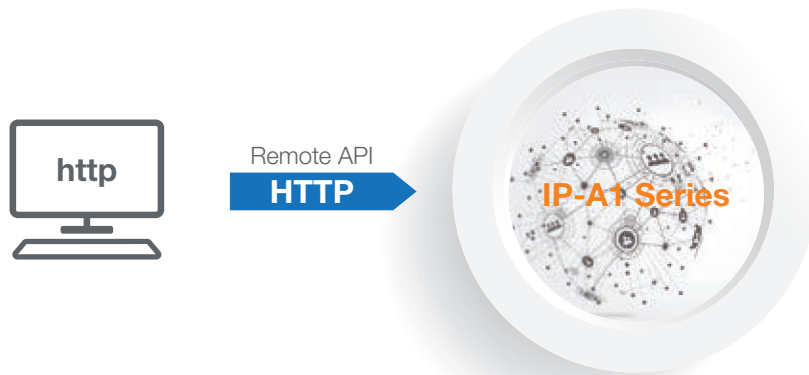


» Weekly Timer

Weekly Timer function is available to play broadcast patterns by specifying "Start" time, "End" time and effective Day of Week.



07 What can be achieved by HTTP commands?



Play and Stop Internal Audio Files

ALL

- Internal audio files can be played back and stopped.

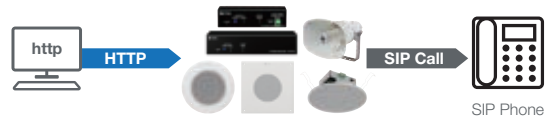


Number of times to repeat / Interval time / Volume Level and others

Initiating a SIP Call

PA12 AF PC238 SC15 PC580R/S

- A SIP call can be initiated and cancelled from an IP-A1 device to a pre-registered SIP phone.



Volume Setting

ALL

- Master volume, Master offset volume and Internal audio source volume can be adjusted and configured.



“Command Set” Distribution

RM PG

- Up to 10 pre-registered HTTP Command Set can be distributed from IP-A1PG. And each Command Set consists of up to 20 commands.



Get Device Status and Setting Values

ALL

- Device status and setting values can be obtained.



Device Maintenance

ALL

- Key device maintenance operations can be performed.



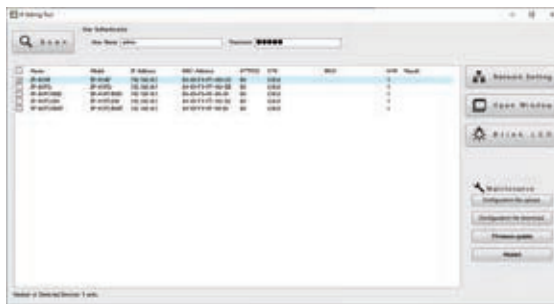
Please contact us to get the full command list.

08 IP Setting Tool Software



(Free to download)

- All IP-A1 series endpoint devices within the same network can be discovered and displayed as a list.
- Configuration file can be downloaded/uploaded.
- Firmware can be updated.
- Basic network settings can be configured on single device or multiple devices.



PC Requirements

OS	Windows 10 Pro (64bit) / 10 Home (64bit) / 11 Pro / 11 Home
Display	Resolution: 1366 x 768 or more

IP-A1MP Microphone Panel



(with accessory cover plate)

- Audio accessory unit to be used in conjunction with IP-A1 series devices for having two-way conversations or audio monitoring
- Omni-directional electret condenser microphone
- Momentary type push switch to initiate a call
- Indicator lights during control input is being triggered
- 1 control input and output 1 electronically-balanced audio output (0dB, 200Ω)

Specifications

	IP-A1MP
Phantom Power	9 V DC - 26 V DC
Current Consumption	8 mA or less (at 12 V DC)
Microphone Type	Omni-directional electret condenser microphone
Frequency Response	100 Hz - 10 kHz
Microphone Output	0 dB (*1), 200 Ω, (Volume adjustable), electronically-balanced, push-in terminal block
Push Switch	Momentary type (Control output circuit is closed while pressed)
Control Output	No-Voltage make contact output, withstand Voltage: 30 V DC, control current: 100 mA, push-in terminal block
Indicator	Green (Lit during control input) (*2)
Control Input	No-Voltage make contact input, open Voltage: 5 V DC, short-circuit current: 0.2 mA or less, push-in terminal block
Cable Requirement	Microphone output: Two-core shielded cable or Shielded twisted pair cable, Control input/output: Twisted pair cable
Operating Temperature	-20 °C to +55 °C (-4 °F to 131 °F)
Finish	Front case: Surface-treated steel I plate, white (RAL 9016 equivalent), semi-gloss, paint Rear case, bracket: Surface-treated steel plate, black zinc plating Plate: ABS resin, white (RAL 9016 equivalent), gloss
Dimensions	44.6 (W) x 107 (H) x 29 (D) mm (1.76" x 4.21" x 1.14") (excluding projection)
Weight	170 g (0.37 lb)
Accessory	Plate ...1, Plate mounting screw (M3.5 x 5.5, preinstalled on the plate) ...2, Box mounting screw (M4 x 35) ...2
Applicable Box	Flush-Mount Box: YC-801, Wall-Mount Box: YC-802

(*1) When using in Local Input Broadcasting Mode, assume Audio Delay Time.

(*2) 0 dB = 1 V

IP-A1RM IP Remote Microphone



- Angle adjustable gooseneck microphone with compressor effect
- 10 function-assignable keys to initiate broadcasts or controls
- GUI calendar scheduler function (up to 2,000 settings)
- System mute function to mute all broadcasts made by every single IP-A1 series devices within the same network
- 1 AUX audio input (LINE/MIC selectable, phantom power On/Off)
- 2 control inputs, 1 control output and 1 mute control input
- Independent volume control for microphone and AUX input
- HTTP commands (send/receive)
- Audio file storage (20 files, total 80MB, WAV/MP3)
- PoE powered

Specifications

Specifications	IP-A1RM
Power Source	PoE(IEEE802.3af Class 3)
Power Consumption	3.5 W
Audio Transmission Method	SIP broadcasting: Unicast Audio Streaming, Group broadcasting: Multicast Audio Streaming
Audio Codec	PCMU(G.711u), PCMA(G.711a), G.722
Network I/F	100BASE-TX, Auto MDI/MDI-X, RJ45
Network Protocol	TCP/IP, UDP, HTTP, RTP, RTCP, ARP, ICMP, NTP, SIP (RFC3261)
Microphone	Unidirectional electret condenser microphone (With microphone indicator and microphone volume control)
AUX Input	1 channel, unbalanced, 10 kΩ, LINE/MIC selectable (Rated input: LINE: 0 dB (*1), MIC: -60 dB (*1)) PAD function (-20 dB (*1)), AUX volume adjustable, φ3.5 mm mini jack
Monitor Speaker	Cone-type speaker, Speaker volume adjustable, Rated Output: 1 W
Control Input	2 channel, no-voltage make contact inputs, open voltage: 5V DC, short-circuit current: 2 mA or less, push-in terminal block
Mute Control Input	1 channel, 24 V DC cut signal, control current 5 mA or less, push-in terminal block
Control Output	1 channel, open collector output, withstand voltage: 30 V DC, control current: 10 mA or less, push-in terminal block
Operation	Operation key: TALK, HOME, REC, MONITOR, SHIFT /KEY LOCK, Function key: VOLUME, RIGHT, LEFT, Selection key: 0 - 9
Indicator	LCD display: 3 (255 x 160 dots) with backlight, Indicator: Status indicator (green/ blue/ yellow/ red), Microphone indicator (blue), LINK/ACT indicator (green)
Manual broadcast/control	Manual broadcasting: Microphone broadcast, Recorded audio broadcasting, AUX input broadcast Manual control: control output, command set transmission, Control trigger: key operation
Internal Message	Max. 20 messages (Max. recording capacity: 80 MB), Supported file format: WAV file: 8/16/44.1/48 kHz sampling frequency, 8/16 bit, monoaural/stereo MP3 file: 32/44.1/48 kHz sampling frequency, 64 - 320 kbps, CBR/VBR, monoaural/stereo, Repeat playback: Playcount (1-10 times) or Duration (5-3600 sec) Interval time: 0-99 sec, Delay time: 0-99 sec, Control trigger: key operation, scheduler, control input, remote API (HTTP)
Recorded audio broadcast	Audio recording and playback broadcast with the built-in microphone, Max. 2 minutes, 1 message
Chime	Pre and post chime tones (applied for manual broadcast and internal audio file broadcast), Preset chime tone x5, editable tone x2
Scheduler	Scheduled broadcasting and control by WEB-UI (Max. schedule settings:2000) Configurable actions: Internal message broadcast, audio input broadcast, control output, command set transmission
Event	Execute event triggered by control input Configurable actions: Internal message broadcast, audio input broadcast, command set transmission, broadcast disable, system mute
Command Set	20 commands can be registered in each of 10 command sets
Clock Accuracy	±13 seconds per month
Time Adjustment	Manual time setting, Time adjustment by NTP server
Power Outage Protection Period	24 hours (RTC time retention, at 40 °C (104 °F))
Language	English / Japanese
Operating Temperature	0 °C to +40 °C (32 °F to 104 °F)
Operating Humidity	90 %RH or less (no condensation)
Finish	ABS resin, black, paint
Dimensions	224 (W) X 47.2 (H) X 136 (D) mm (8.82" x 1.86" x 5.35") (excluding microphone)
Weight	630 g (1.39 lb)
Accessory	Zip tie ...2
Option	Wall mounting bracket: WB-RM500

(*1) When using Monitor output, assume an audio delay time.

(*2) 0 dB = 1 V

IP-A1PG IP Paging Gateway



IP-A1PG front



IP-A1PG rear

- Convert SIP audio, ONVIF Audio, internal audio files or local audio source into Multicast streaming
- GUI calendar scheduler function (up to 2,000 settings)
- System mute function to mute all broadcasts made by every single IP-A1 series devices within the same network
- 1 local audio input (LINE/MIC selectable, phantom power On/Off)
- 4 control inputs and 1 control output
- HTTP commands (receive/send)
- Audio file storage (20 files, total 80MB, WAV/MP3)
- PoE powered

Specifications

	IP-A1PG
Power Source	PoE(IEEE802.3af Class 3)
Power Consumption	2.5 W
Audio Transmission Method	Multicast Audio Streaming
Audio Codec	PCMU(G.711u), PCMA(G.711a), G.722
Audio Delay Time	Min. 100 ms(*1)
Network I/F	100BASE-TX, Auto MDI/MDI-X, RJ45 connector
Network Protocol	TCP/IP, UDP, HTTP, RTP, RTSP, RTCP, ARP, ICMP, IGMPv3, NTP, SIP(RFC3261)
Audio Input	1 channel, electronically-balanced, 10 kΩ LINE/MIC selectable (Rated input: LINE: 0 dB (*2), MIC: -60 dB (*2)) PAD function (-20 dB (*2)), Phantom power ON/OFF (12 V DC), volume adjustable removable terminal block (6 pins)
Monitor Output	1 channel, electronically-balanced, 600 Ω or less Rated output: 0 dB (*2), RCA pin jack
Control Input	4 channels, no-voltage make contact inputs, open voltage: 5 V DC, short-circuit current: 2 mA or less, removable terminal block (6 pins)
Mute Control Input	1 channel, 24 V DC cut signal, control current 5 mA or less, removable terminal block (2 pins)
Control Output	1 channel, open collector output, withstand voltage: 30 V DC, control current: 10 mA or less, removable terminal block (6 pins)
Indicator	STATUS (green/blue/orange/red), LINE/MIC IN (green/red), OUTPUT (green), LINK/ACT (green)
Broadcasting	Audio transmission: Transmit internal messages by multicast audio streaming, Transmit audio from audio input connected devices by multicast audio streaming Audio conversion: Convert audio from Video Management Systems using ONVIF or SIP Phone Systems into multicast audio stream and transmit.
Scheduler	Scheduled broadcasting and control by WEB-UI (Max. schedule settings:2000) Configurable actions: Internal message broadcast, audio input broadcast, control output, command set transmission
Event	Execute event triggered by control input Configurable actions: Internal message broadcast, audio input broadcast, command set transmission, broadcast disable, system mute
Internal Message	Max. 20 messages (Max. recording capacity: 80 MB) Supported file format: WAV file: 8/16/44.1/48 kHz sampling frequency, 8/16 bit, monoaural/stereo MP3 file: 32/44.1/48 kHz sampling frequency, 64 - 320 kbps, CBR/VBR, monoaural/stereo Repeat playback: Playcount (1 - 10 times) or Duration (5 - 3600 sec) Interval time: 0 - 60 sec, Delay time: 0 - 30 sec
Command Set	20 commands can be registered in each of 10 command sets
Clock Accuracy	±13 seconds per month
Time Adjustment	Manual time setting, Time adjustment by NTP server
Power Outage Protection Period	24 hours (RTC time retention, at 40 °C (104 °F))
Operating Temperature	0 °C to +40 °C (32 °F to 104 °F)
Operating Humidity	90 %RH or less (no condensation)
Finish	Front case: Surface-treated steel plate, black, paint Rear chassis: Surface-treated steel plate
Dimensions	126 (W) x 33 (H) x 80 (D) mm (4.96" x 1.3" x 3.15") (excluding projection)
Weight	390 g (0.86 lb)
Accessory	Removable terminal plug (6 pins, preinstalled on the unit) ...2, Removable terminal plug (2 pins, preinstalled on the unit), Rubber feet ...4, Mounting screw (M3 x 6) ...4

(*1) When using Monitor output, assume an audio delay time.

(*2) 0 dB = 1 V

IP-A1PA12 IP Power Amplifier 12W



IP-A1PA12 front



IP-A1PA12 rear

- 12W amplifier to drive 100/70/25V line speakers
- Receive SIP audio, ONVIF Audio and Multicast
- Local broadcast using internal audio files or local audio source
- External amplifier input (100/70/25V) to share speakers between the built-in amplifier and external PA amplifier to be switched over
- 1 audio input (LINE/MIC selectable, phantom power On/Off)
- 2 control inputs, 1 control output and 1 mute control input
- HTTP commands (receive)
- Audio file storage (20 files, total 80MB, WAV/MP3)
- Playback programs (Repeat, Weekly Timer)
- PoE+ powered

Specifications

	IP-A1PA12
Power Source	PoE+ (IEEE802.3at Class 4)
Power Consumption	25 W (rated output), 6 W (IEC62368-1)
Amplifier Rated Output	12 W
Frequency Response	100 Hz - 20 kHz
Audio Codec	PCMU (G.711u), PCMA (G.711a), G.722
Audio Delay Time	Min. 100 ms (*1)
Broadcasting Mode	SIP Broadcasting/SIP calling Mode: PCMU /PCMA/G. 722, P2P /SIP Server Connection Multicast Broadcasting Mode: PCMU/PCMA/G.722 Auto codec recognition, 20 ports VMS Broadcasting Mode: PCMU Internal Message Broadcasting Mode Local Broadcasting Mode: Output from LINE/MIC IN to SPEAKER OUT Note: Each broadcast mode can be assigned an order of priority using the Priority Setting function.
Internal Messages	Max. 20 messages (Max. recording capacity: 80 MB Supported file formats: WAV file: 8/16/ 44.1 / 48 kHz sampling frequency, 8/16 bit, monoaural/stereo MP3 file: 32/ 44.1 / 48 kHz sampling frequency, 64 - 320 kbps, CBR/VBR, monoaural/stereo Repeat playback: Playcount (1 - 10 times), Duration (5 - 3600 sec) or Timer (from Start time to End time) Interval time: 0 - 99 sec, Delay time: 0 - 99 sec , Trigger: Control Input or Remote API (HTTP)
Network I/F	100BASE-TX, Auto MDI/MDI-X, RJ45
Network Protocol	TCP/IP, UDP, HTTP, RTP, RTSP, RTCP, ARP, ICMP, IGMPv3, NTP, SIP (RFC3261)
Speaker Output	High impedance 100 V line (830 Ω), 70 V line (420 Ω), 25 V line (52 Ω) N (100 V), N (70 V/25 V switchable), R, C removable terminal block (4pins)
External Amplifier Input	High impedance 100 V line, 70 V line, 25 V line , N (100 V), N (70 V/25 V switchable), R, C removable terminal block (4pins)
Amplifier Switching Control	Relay switching Switched to external amplifier when the following functions and operations are activated: mute control input, control input, system mute, remote API control and the unit power off.
Audio Input	1 channel, electronically-balanced, 10 kΩ , LINE/MIC selectable (Rated input: LINE: 0 dB (*2), MIC: -60 dB (*2)) PAD function (-20 dB (*2)), Phantom power ON/OFF (12 V DC), volume adjustable removable terminal block (6 pins)
Audio Output	1 channel, electronically-balanced, 600 Ω or less Rated input: 0 dB (*2), removable terminal block (6 pins)
Control Input	2 channels, no-voltage make contact inputs, open voltage: 5 V DC, short-circuit current: 2 mA or less, removable terminal block (6 pins)
Mute Control Input	1 channel, 24 V DC cut signal, control current: 5 mA or less, removable terminal block (2 pins)
Control Output	1 channel, open collector output, withstand voltage: 30 V DC, control current: 10 mA or less, removable terminal block (6 pins)
Indicator	STATUS (green/blue/yellow/red), LINE/MIC IN (green/red), OUTPUT (green),LINK/ACT (green)
Clock Accuracy	±13 seconds per month
Time Adjustment	Manual time setting, Time adjustment by NTP server
Power Outage Protection Period	24 hours (RTC time retention, at 40 °C (104 °F))
Language	English / Japanese
Operating Temperature	-30 °C to +55 °C (-22 °F to 131 °F)
Operating Humidity	90 %RH or less (no condensation)
Finish	Front case: Surface-treated steel plate, black, paint Rear chassis: Surface-treated steel plate
Dimensions	210 (W) x 44 (H) x 81.5 (D) mm (8.27" x 1.73" x 3.21") (excluding projection)
Weight	940 g (2.07 lb)
Accessory	Removable terminal plug (6 pins, preinstalled on the unit) ...2, Removable terminal plug (4 pins, preinstalled on the unit) ...2, Removable terminal plug (2 pins, preinstalled on the unit) ...1, Rubber feet ...4, Mounting screw (B tight 3 x 6) ...4

(*1) When using in Local Input Broadcasting Mode, assume Audio Delay Time.

(*2) 0 dB = 1 V

IP-A1AF IP Audio Interface



IP-A1AF front



IP-A1AF rear

- Receive SIP audio, ONVIF Audio and Multicast
- Local broadcast using internal audio files or local audio source 1
- audio input (LINE/MIC selectable, phantom power On/Off) 8W
- (PoE)/15W(PoE+) built-in amplifier, 1 LINE audio output
- 2 control inputs and 1 control output
- HTTP commands (receive)
- Audio file storage (20 files, total 80MB, WAV/MP3)
- Playback programs (Repeat, Weekly Timer)
- PoE/PoE+ powered

Specifications

	IP-A1AF
Power Source	PoE+ (IEEE802.3at Class 4), PoE (IEEE802.3af Class 3)
Power Consumption	22 W (at PoE+ powered, rated output) 12.95 W (at PoE powered, rated output) 5 W (IEC62368-1)
Amplifier Rated Output	15 W (at PoE+, powered, 8 Ω) 8 W (at PoE, powered, 8 Ω) Applicable impedance: 8 - 16 Ω
Frequency Response	50 Hz - 20 kHz
Audio Codec	PCMU (G.711u), PCMA (G.711a), G.722
Audio Delay Time	Min. 100 ms (*1)
Broadcasting Mode	SIP Broadcasting/SIP calling Mode: PCMU/PCMA/G.722, P2P/SIP Server Connection Multicast Broadcasting Mode: PCMU/PCMA/G.722 Auto codec recognition, 20 ports VMS Broadcasting Mode: PCMU Internal Message Broadcasting Mode Local Broadcasting Mode: Output from LINE/MIC IN to SPEAKER OUT Note: Each broadcast mode can be assigned an order of priority using the Priority Setting function.
Internal Messages	Max. 20 messages (Max. recording capacity: 80 MB) Supported file formats WAV file: 8/16/44.1/48 kHz sampling frequency, 8/16 bit, monoaural/stereo MP3 file: 32/44.1/48 kHz sampling frequency, 64 - 320 kbps, CBR/VBR, monoaural/stereo Repeat playback: Playcount (1 - 10 times), Duration (5 - 3600 sec) or Timer (from Start time to End time) Interval time: 0 - 60 sec, Delay time: 0 - 30 sec Trigger: Control Input or Remote API (HTTP)
Network I/F	100BASE-TX, Auto MDI/MDI-X, RJ45 connector
Network Protocol	TCP/IP, UDP, HTTP, RTP, RTSP, RTCP, ARP, ICMP, IGMPv3, NTP, SIP (RFC3261)
Audio Input	1 channel, electronically-balanced, 10 kΩ LINE/MIC selectable (Rated input: LINE: 0 dB (*2), MIC: -60 dB (*2)) PAD function (-20 dB (*2)), Phantom power ON/OFF (12 V DC), volume adjustable removable terminal block (6 pins)
Audio Output	1 channel, electronically-balanced, 600 Ω or less Rated input: 0 dB (*2), removable terminal block (6 pins)
Control Input	2 channels, no-voltage make contact inputs, open voltage: 5 V DC, short-circuit current: 2 mA or less, removable terminal block (6 pins)
Control Output	1 channel, open collector output, withstand voltage: 30 V DC, control current: 10 mA or less, removable terminal block (6 pins)
Indicator	STATUS (green/blue/orange/red), LINE/MIC IN (green/red), OUTPUT (green), LINK/ACT (green)
Clock Accuracy	±13 seconds per month
Time Adjustment	Manual time setting, Time adjustment by NTP server
Power Outage Protection Period	24 hours (RTC time retention, at 40 °C (104 °F))
Operating Temperature	-30 °C to +55 °C (-22 °F to 131 °F)
Operating Humidity	90 %RH or less (no condensation)
Finish	Front case: Surface-treated steel plate, black, paint Rear chassis: Surface-treated steel plate
Dimensions	126 (W) x 33 (H) x 80 (D) mm (4.96" x 1.3" x 3.15") (excluding projection)
Weight	390 g (0.86 lb)
Accessory	Removable terminal plug (6 pins, preinstalled on the unit) ...2, Removable terminal plug (2 pins, preinstalled on the unit) ...1, Rubber feet ...4, Mounting screw (M3 x 6) ...4

(*1) When using in Local Input Broadcasting Mode, assume Audio Delay Time.

(*2) 0 dB = 1 V

IP-A1PC238 IP Ceiling Speaker



- 16cm (6") cone-type speaker for in-ceiling installations
- Receive SIP audio, ONVIF Audio and Multicast
- Local broadcast using internal audio files
- 8W built-in amplifier
- 2 control inputs and 1 control output
- HTTP commands (receive)
- Audio file storage (20 files, total 80MB, WAV/MP3)
- Playback programs (Repeat, Weekly Timer)
- PoE powered

Specifications

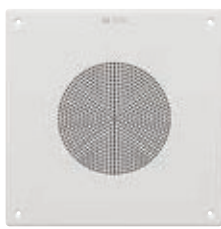
	IP-A1PC238
Power Source	PoE (IEEE802.3af Class 3)
Power Consumption	12.95 W (rated output) 5 W (IEC62368-1)
Amplifier Rated Output	8 W
Sensitivity	94 dB (1 W, 1 m) (500 Hz - 5 kHz, pink noise)
Maximum Sound Pressure Level	103 dB (8 W, 1 m)
Frequency Response	60 Hz - 20 kHz (peak - 20 dB)
Speaker Component	16 cm (6") cone-type
Audio Codec	PCMU (G.711u), PCMA (G.711a), G.722
Broadcasting Mode	SIP Broadcasting Mode: PCMU/PCMA/G.722, P2P/SIP Server Connection Multicast Broadcasting Mode: PCMU/PCMA/G.722 Auto codec recognition, 20 ports VMS Broadcasting Mode: PCMU Internal Message Broadcasting Mode Note: Each broadcast mode can be assigned an order of priority using the Priority Setting function.
Internal Messages	Max. 20 messages (Max. recording capacity: 80 MB) Supported file formats WAV file: 8/16/44.1/48 kHz sampling frequency, 8/16 bit, monoaural/stereo MP3 file: 32/44.1/48 kHz sampling frequency, 64 - 320 kbps, CBR/VBR, monoaural/stereo Repeat playback: Playcount (1-10 times), Duration (5-3600 sec) or Timer (from Start time to End time) Interval time: 0 - 60 sec, Delay time: 0 - 30 sec Trigger: Control Input or Remote API (HTTP)
Network I/F	100BASE-TX, Auto MDI/MDI-X, RJ45 connector
Network Protocol	TCP/IP, UDP, HTTP, RTP, RTSP, RTCP, ARP, ICMP, IGMPv3, NTP, SIP (RFC3261)
Control Input	2 channels, no-voltage make contact inputs, open voltage: 5 V DC, short-circuit current: 2 mA or less, removable terminal block (6 pins)
Control Output	1 channel, open collector output, withstand voltage: 30 V DC, control current: 10 mA or less, removable terminal block (6 pins)
Indicator	STATUS (orange), LINK/ACT (green)
Clock Accuracy	±13 seconds per month
Time Adjustment	Manual time setting, Time adjustment by NTP server
Power Outage Protection Period	24 hours (RTC time retention, at 40 °C (104 °F))
Dimensions for Fixing Hole	Mounting hole: $\phi 200 \pm 2$ mm (7.87" ± 0.08 ") Ceiling thickness: 5 - 25 mm (0.2" - 0.98")
Speaker Mounting Method	Spring clamp
Operating Temperature	0 °C to +50 °C (32 °F to 122 °F)
Operating Humidity	90 %RH or less (no condensation)
Finish	Frame: Steel plate, white (RAL 9016 equivalent), paint Grill: Steel net, white (RAL 9016 equivalent), paint
Dimensions	$\Phi 230 \times 89$ (D) mm (9.06" \times 3.5")
Weight	880 g (1.94 lb)
Accessory	Pattern paper ...1, Removable terminal plug (6 pins, preinstalled on the unit) ...1

NOTE: Please do not install the product near heat insulation material, or cover the product with heat insulation or acoustic absorbing materials to prevent fire risk. Please do not install the product in damp or wet locations or areas with high humidity (condensing) as it may cause damage to the product.

IP-A1PC580R IP Ceiling Mount Speaker
IP-A1PC580S IP Square Speaker



IP-A1PC580R



IP-A1PC580S

- 20cm (8") dual cone-type speaker with metal construction
- Receive SIP audio, ONVIF Audio and Multicast
- Local broadcast using internal audio files
- 1 audio input (LINE/MIC selectable, phantom power On/Off)
- 8W built-in amplifier, 1 LINE audio output
- 2 control inputs and 1 control output
- HTTP commands (receive)
- Audio file storage (20 files, total 80MB, WAV/MP3)
- Playback programs (Repeat, Weekly Timer)
- PoE powered

Specifications

	IP-A1PC580R	IP-A1PC580S
Power Source	PoE (IEEE802.3af Class 3)	
Power Consumption	12.95 W (rated output) 5 W (IEC62368-1)	
Amplifier Rated Output	8 W	
Sensitivity	97 dB (1 W,1 m)	
Maximum Sound Pressure Level	106 dB (8 W,1 m)	
Frequency Response	50 Hz - 16.5 kHz	
Speaker Component	20 cm (8") Dual cone-type	
Audio Codec	PCMU (G.711u), PCMA (G.711a), G.722	
Broadcasting Mode	SIP Broadcasting/SIP calling Mode: PCMU/PCMA/G.722, P2P/SIP Server Connection Multicast Broadcasting Mode: PCMU/PCMA/G.722 Auto codec recognition, 20 ports VMS Broadcasting Mode: PCMU Internal Message Broadcasting Mode Note: Each broadcast mode can be assigned an order of priority using the Priority Setting function.	
Internal Messages	Max. 20 messages (Max. recording capacity: 80 MB) Supported file format: WAV file: 8/16/44.1/48 kHz sampling frequency, 8/16 bit, monoaural/stereo MP3 file: 32/44.1/48 kHz sampling frequency, 64 - 320 kbps, CBR/VBR, monoaural/stereo Repeat playback: Playcount (1 - 10 times), Duration (5 - 3600 sec) or Timer (from Start time to End time) Interval time: 0 - 60 sec, Delay time: 0 - 30 sec Trigger: Control Input or Remote API (HTTP)	
Network I/F	100BASE-TX, Auto MDI/MDI-X, RJ45 connector	
Network Protocol	TCP/IP, UDP, HTTP, RTP, RTSP, RTCP, ARP, ICMP, IGMPv3, NTP, SIP(RFC3261)	
Audio Input	1 channel, electronically-balanced, 10 kΩ LINE/MIC selectable (Rated input: LINE: 0 dB (*1), MIC: -60 dB(*1)) PAD function(-20 dB(*1)), Phantom power ON/OFF(12 V DC), volume adjustable removable terminal block(6 pins)	
Audio Output	1 channel, electronically-balanced, 600 Ω or less Rated output: 0 dB(*1), removable terminal block (6 pins)	
Control Input	2 channels, no-voltage make contact inputs, open voltage: 5 V DC, short-circuit current: 2 mA or less, removable terminal block (6 pins)	
Control Output	1 channel, open collector output, withstand voltage: 30 V DC, control current: 10 mA or less, removable terminal block (6 pins)	
Indicator	STATUS (green/blue/orange/red), LINE/MIC IN (green/red), OUTPUT(green), LINK/ACT(green)	
Clock Accuracy	±13 seconds per month	
Time Adjustment	Manual time setting, Time adjustment by NTP server	
Power Outage Protection Period	24 hours (RTC time retention, at 40 °C (104 °F))	
Dimensions for Fixing Hole	Mounting hole: Φ228.6 mm (9")	
Speaker Mounting Method	Screw in type	
Operating Temperature	0 °C to +50 °C (32 °F to 122 °F)	
Operating Humidity	90 %RH or less (no condensation)	
Finish	Frame: Steel plate, white (RAL 9016 equivalent), paint Grill: Steel net, white (RAL 9016 equivalent), paint	
Dimensions	Φ324 x 111 (D) mm (12.76" x 4.37")	318 (W) x 318 (H) x 108 (D) mm (12.52" x 12.52" x 4.25")
Weight	1.8 kg (3.97 lb.)	2 kg (4.41 lb.)
Accessory	Pattern paper...1, Removable terminal plug (6 pins, preinstalled on the unit) ...2, Mounting screw (5 x 38) ...4	
Option	Back Can (for UL 2043 certified installation): HY-BC580U	

(*1) 0 dB = 1V

NOTE: Please do not install the product near heat insulation material, or cover the product with heat insulation or acoustic absorbing materials to prevent fire risk. Please do not install the product in damp or wet locations or areas with high humidity (condensing) as it may cause damage to the product.

IP-A1SC15 IP Horn Speaker



- 124dB (PoE+ powered) with IP66 rating for outdoor installations
- Receive SIP audio, ONVIF Audio and Multicast
- Local broadcast using internal audio files
- 8W (PoE)/15W(PoE+) built-in amplifier
- 2 control inputs and 1 control output
- HTTP commands (receive)
- Audio file storage (20 files, total 80MB, WAV/MP3)
- Playback programs (Repeat, Weekly Timer)
- PoE/PoE+ powered

Specifications

	IP-A1SC15
Power Source	PoE+ (IEEE802.3at Class 4), PoE (IEEE802.3af Class 3)
Power Consumption	22 W (at PoE+ powered, rated output), 12.95 W (at PoE powered, rated output), 5 W (IEC62368-1)
Amplifier Rated Output	15 W (at PoE+ powered), 8 W (at PoE powered)
Sensitivity	112 dB (1 W, 1 m) (500 Hz - 2.5 kHz, peak level)
Maximum Sound Pressure Level	124 dB (at PoE+ powered, 15 W, 1 m) (500 Hz - 2.5 kHz, peak level) 121 dB (at PoE powered, 8 W, 1 m) (500 Hz - 2.5 kHz, peak level)
Frequency Response	280 Hz - 12.5 kHz
Audio Codec	PCMU (G.711u), PCMA (G.711a), G.722
Broadcasting Mode	SIP Broadcasting Mode: PCMU/PCMA/G.722 Multicast Broadcasting Mode: PCMU/PCMA/G.722, Auto codec recognition, Max. 20 ports VMS Broadcasting Mode: PCMU Internal Message Broadcasting Mode Note: Each broadcast mode can be assigned an order of priority using the Priority Setting function.
Internal Messages	Max. 20 messages (Max. recording capacity: 80 MB) Supported file formats WAV file: 8/16/44.1/48 kHz sampling frequency, 8/16 bit, monoaural/stereo MP3 file: 32/44.1/48 kHz sampling frequency, 64 - 320 kbps, CBR/VBR, monoaural/stereo Repeat playback: Playcount(1-10 times), Duration (5-3600 sec) or Timer (from Start time to End time) Interval time: 0 - 60 sec, Delay time: 0 - 30 sec Trigger: Control Input or Remote API (HTTP)
Network I/F	100BASE-TX, MDI/MDI-X, RJ-45
Network Protocol	TCP/IP, UDP, HTTP, RTP, RTSP, ARP, ICMP, IGMPv3, NTP, SIP (RFC3261)
Control Input	2 channels, no-voltage make contact inputs, open voltage: 5 V DC, short-circuit current: 2 mA or less, removable terminal block (3 pins)
Control Output	1 channel, open collector output, withstand voltage: 30 V DC, control current: 10 mA or less, removable terminal block (3 pins)
Indicator	LAN LINK/ACT (green), STATUS (orange)
Clock Accuracy	±13 seconds per month
Time Adjustment	Manual time setting, Time adjustment by NTP server
Power Outage Protection Period	24 hours (RTC time retention, at 40 °C (104 °F))
Dust/Water Protection	IP66
Operating Temperature	-30 °C to +55 °C (-22 °F to +131 °F)
Operating Humidity	90 %RH or less (no condensation)
Finish	Horn flare and body: Aluminum, off-white (RAL 9010 equivalent), paint Reflector horn: ABS resin, off-white (RAL 9010 equivalent) Rear cover: PC resin, off-white (RAL 9010 equivalent), paint Bracket, screws and bolts: Stainless steel
Dimensions	222 (W) x 211 (H) x 276 (D) mm (8.74" x 8.31" x 10.87")
Weight	1.4 kg (3.09 lb)
Accessory	Rear cover...1, Removable terminal plug (3 pins)...2
Option	Speaker mount bracket: SP-131, SP-201, SP-301 Pole band: YS-60B

Note: Take special care to avoid mounting this speaker directly to structures (such as ski lift towers) that generate large amounts of vibration. Also, do not use this speaker in environments where it may be exposed to oil or other chemicals, as mounting parts could rapidly deteriorate, possibly resulting in personal injury or other accidents due to the speaker falling.
These specifications only apply to the firmware version 2.1.0.



IP-SC15MC IP Horn Speaker with Microphone



- Bi-directional communication with built-in internal mic
- IP66 rating for weatherproof outdoor installations
- Local broadcast using internal audio files
- Up to 124dB and Up to 15 W ($\pm 10\%$)
- 2 control inputs and 1 control output
- HTTP commands (receive)

Specifications

	IP-SC15MC
Power Source	PoE+ (IEEE 802.3at), PoE (IEEE 802.3af), DC 24 V
Power Consumption	Up to 20 W (+/- 10%), Dynamic Power Adjustment
Amplifier Rated Output	Up to 15 W (+/- 10%) via Dynamic Power Output Adjustment based on power availability
Sensitivity	113 dB (1 W, 1 m) (500 Hz - 2.5 kHz, peak level)
Maximum Sound Pressure Level	Up to 124 dB (at PoE+ powered, 15 W, 1 m) (500 Hz - 2.5 kHz, peak level)
Frequency Response	250 Hz- 10.0 kHz
Audio Codec	PCMU (G.711u), PCMA (G.711a), G.722
Broadcasting Mode	SIP Broadcasting Mode: PCMU/PCMA/G.722 Multicast Broadcasting Mode: PCMU/PCMA/G.722, Auto codec recognition, Max. 10 ports VMS Broadcasting Mode: PCMU Internal Message Broadcasting Mode Note: Each broadcast mode can be assigned an order of priority using the Priority Setting function.
Internal Messages	Up to 128 MB Max. recording capacity Supported file formats: - MP3 file: 32kHz sampling frequency, 128 kbps, CBR/VBR, monaural/stereo Repeat playback: Not Available Trigger: Control Input or Remote API (HTTP) Upload files via FTP Upload Tool
Network I/F	100BASE-TX, MDI/MDI-X, RJ-45
Network Protocol	TCP/IP, UDP, HTTP, RTP, ARP, ICMP, IGMP, SIP (RFC3261)
Control Input	2 channels, no-voltage make contact inputs, open voltage: 5 V DC, short-circuit current: 2 mA or less, removable terminal block (3 pins)
Control Output	1 channel, open collector output, withstand voltage: 30 V DC, control current: 50 mA or less, removable terminal block (3 pins)
Indicator	LAN LINK/ACT (green), STATUS (orange), internal
Dust/Water Protection	IP66
Operating Temperature	-45°C + 55°C (-49 °F to +131 °F)
Operating Humidity	90 %RH or less (no condensation)
Finish	Horn & Rear: Aluminum, Off-white, powder coating Reflector horn and rear cover: ABS resin, off-white Cable Grant: Aluminum Brackets, screws, and bolts: Stainless steel
Dimensions	285 (W) x 227 (H) x 277 (D) mm (11.22" x 8.93" x 10.90")
Weight	1.95 kg (4.3 lb)
Accessory	6P Terminal-block (1 pcs), 2P Terminal-block (1 pcs) ST4 x 16 Installation screw (4 pcs)
Option	Swivel bracket: YS-151S

Note: Take special care to avoid mounting this speaker directly to structures (such as ski lift towers) that generate large amounts of vibration. Also, do not use this speaker in environments where it may be exposed to oil or other chemicals, as mounting parts could rapidly deteriorate, possibly resulting in personal injury or other accidents due to the speaker falling.

