

# Browser Control for MA-725F/MM-700F

## 1. Browser Control Outline

### 1.1. General Description

The browser Control feature allows password protected control of source, volume control and options on either an MA-725F or MM-700F from a browser on your PC (Internet Explorer, Google Chrome, Firefox, etc.). Smartphones (iOS or Android devices) using a browser function are also supported.

Note: When browser control is active, the front panel and any WP-700 AM controllers will be disabled.

### 1.2. System Requirement

- Any PC or MAC with a web browser. Any iOS or Android smart phone.
- Firmware update requires a PC running Win 7 or Win 10.
- The MA-725F or MM-700F will require the version of firmware (v3.12) or latest

## 2. Browser Operations

### 2.1. Browser Access Page

Point your browser to the mixer's default IP address of 192.168.14.1 (first make sure your computer's IP address is in the same range as the mixer 192.168.14.xxx).



There are two login levels, Administrator and User. Administrator can access all menu and setting parameters. User level is restricted to the Operations menu and Control Center.

Default ID/Password for both levels and allowing for each menu access as next page table.

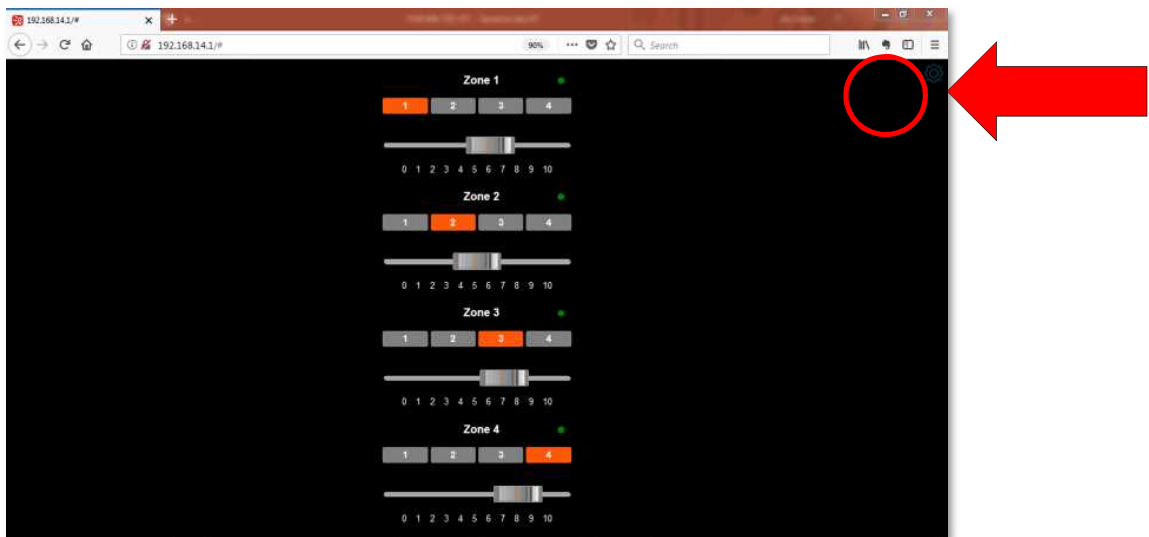
Access Menu Table

Menu	Admin	User
All Zones	<input type="radio"/>	<input type="radio"/>
Zone 1	<input type="radio"/>	<input type="radio"/>
Zone 2	<input type="radio"/>	<input type="radio"/>
Zone 3	<input type="radio"/>	<input type="radio"/>
Zone 4	<input type="radio"/>	<input type="radio"/>
Control Center	<input type="radio"/>	<input type="radio"/>
Labeling	<input type="radio"/>	x
Network Configuration	<input type="radio"/>	x
Password	<input type="radio"/>	x
Default ID	Admin	User
Default Password	Admin	User

NOTE: IF YOU CANNOT CONNECT TO THE DEFAULT IP ADDRESS, YOU MAY NEED TO UPDATE THE SYSTEM FIRMWARE. REFER TO SECTION 3 INSTRUCTIONS ON PAGES 6 AND 7 OF THIS DOCUMENT.

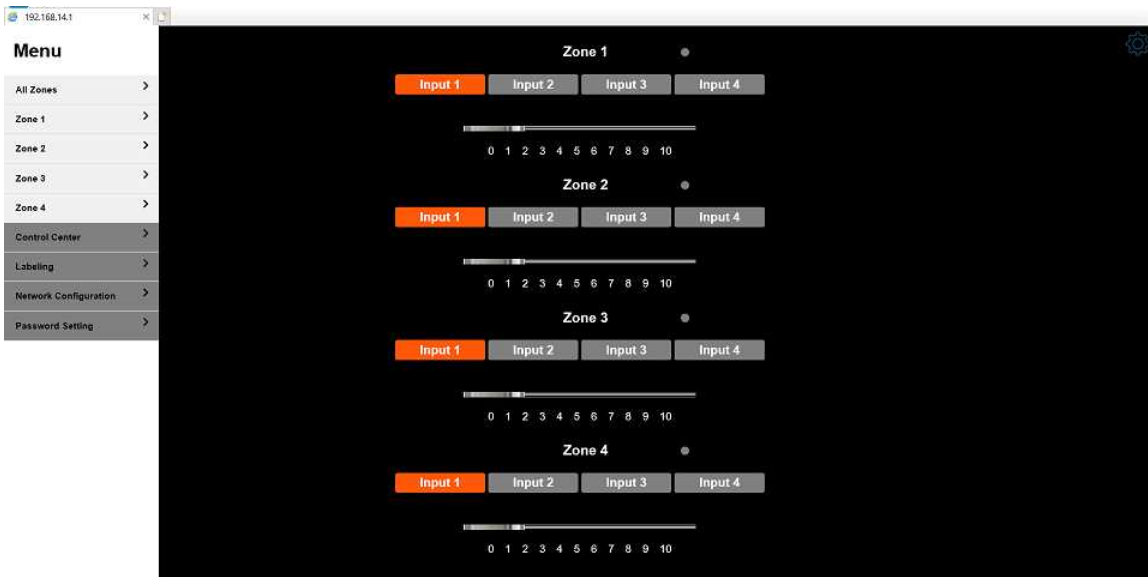
## 2.2. Operations

This is the mixer's landing page for the URL. It allows control of source selection and volume.



To get to the options menu, click on the Gear icon at the top right of the screen as indicate round mark in red color. The icon is dark blue. After the icon is clicked, you will see the Menu side bar (shown on next page)

## Control Center Screen with Menu

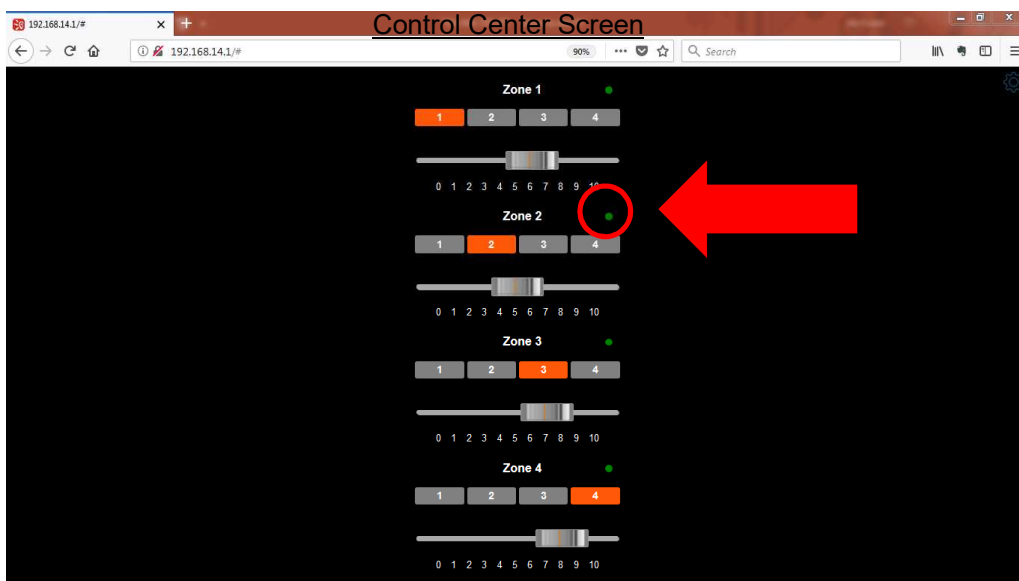


- All Zone:  
View all zones on one page
- Zone: 1 – 4  
View individual zones on one page

### 2.3. Control Center

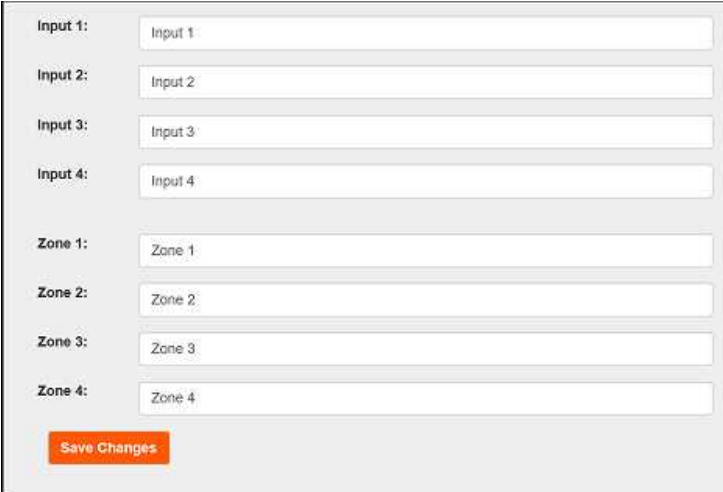
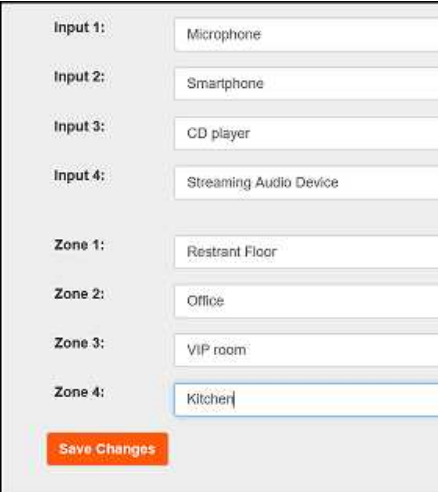
Allows the user to turn Browser Control On or Off by clicking on the green “LED” icons. Green indicates Browser control is on. Grey indicates Browser control is off.

Volume and zone selection are also possible from this window.



## 2.4. Labeling (Administrator only)

Allow to modify labeling for Input 1 to 4 and Zone 1 to 4. Up to 30 digits for each label.  
(Letters and numbers only. No special characters)

<b>Default</b>	➔	<b>Example</b>
 <p>The default configuration screen shows eight input fields. The first four are labeled 'Input 1' through 'Input 4', and the last four are labeled 'Zone 1' through 'Zone 4'. Each field contains its respective default label. An orange 'Save Changes' button is at the bottom.</p>		 <p>The example configuration screen shows the same eight input fields, but with custom labels: 'Microphone', 'Smartphone', 'CD player', 'Streaming Audio Device', 'Restrant Floor', 'Office', 'VIP room', and 'Kitcher'. An orange 'Save Changes' button is at the bottom.</p>

## 2.5. Network Configuration (Administrator only)

View or change the unit's IP address and view Firmware version

### Network Configuration Screen



The Network Configuration Screen displays the following information:

<b>Firmware Version:</b>	V3.11b
<b>Build Date:</b>	Sep 13 2018 00:08:00
<b>Host Name:</b>	MA-725F
<b>MAC Address:</b>	00:05:F9:20:1B:C3
<b>IP Address:</b>	192.168.14.1

An orange 'Save Changes' button is located at the bottom left of the screen.

Note- latest firmware at this document's release date is V3.12. Please check for firmware updates at [www.toaelectronics.com](http://www.toaelectronics.com)

## 2.6. Password Setting (Administrator only)

Up to 6 digits (Letters and numbers only. No special characters)

### Password Setting Screen

<Administrator>

**ADMIN ACCOUNT**

Current Password:

New Password:

Confirm Password:

**Save Changes**

<User>

**USER ACCOUNT**

Current Password:

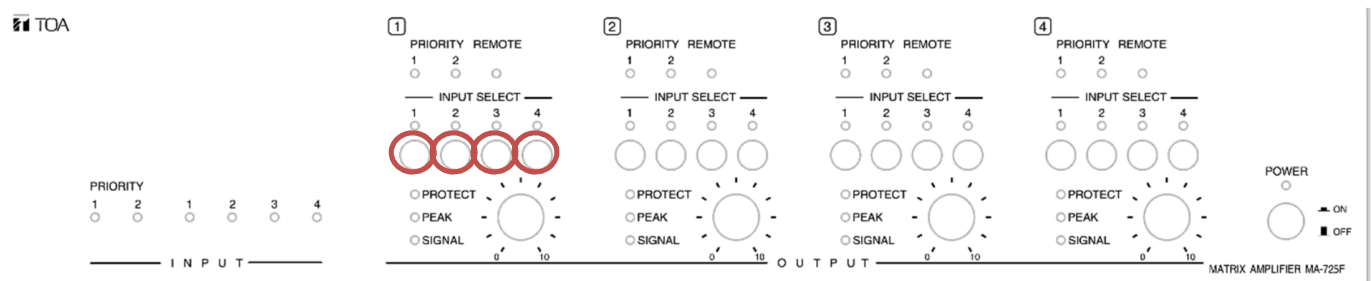
New Password:

Confirm Password:

**Save Changes**

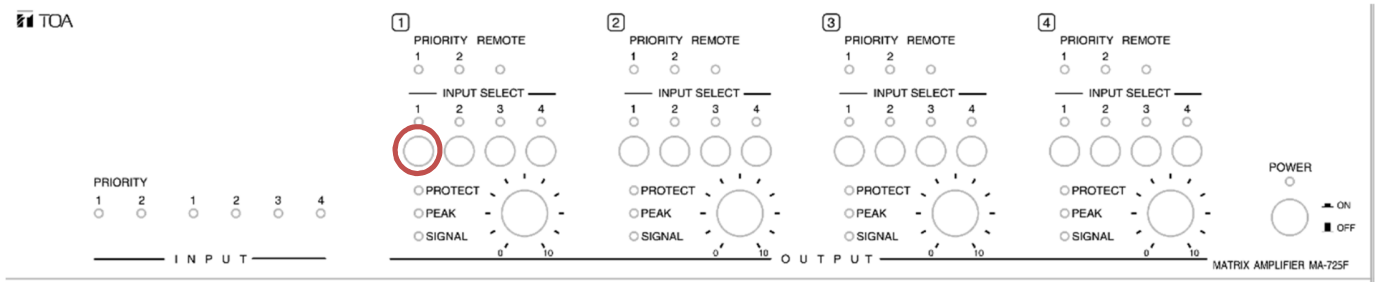
## 2.7. Manual Browser and Wall Controller Control Release

To return control to the wall controllers or front panel, hold down Input Select buttons 1-4 on Zone 1 for more than 4 seconds.



### 3. How to Update MA-725F/MM-700F Firmware

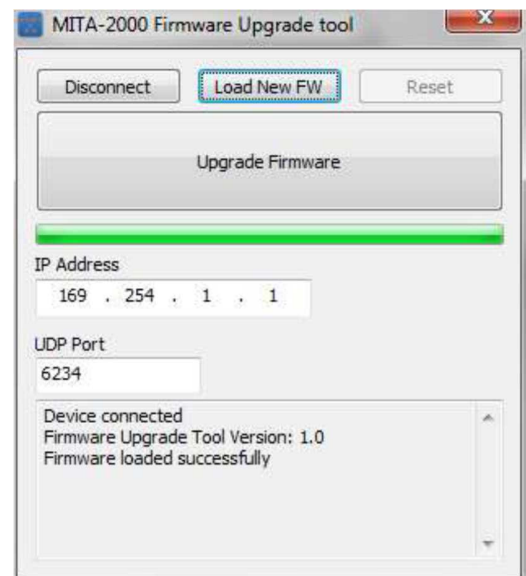
- Connect a straight Ethernet cable from your Windows PC to the MA-725F/MM-700F and turn the MA-725F/MM-700F Off.
- Push and hold the Input 1 select switch on Zone 1



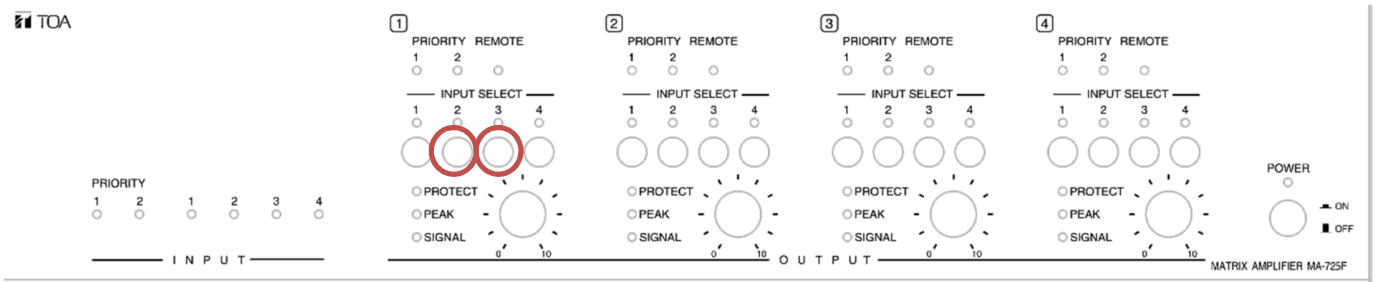
- Restart the MA-725F/MM-700F. When the Power LED starts flashing, release the input 1 select switch.
- You will see the Firmware Upgrade Tool. Click on the executable file and run the program.



- Press the “Connect” button to start communication with the MA-725F/MM-700F.
- Press “Load New FW” and select updating new firmware.
- Press “Upgrade Firmware” button to start the firmware update.
- If the update is successful, your screen will resemble the illustration to the right. >>
- Turn the MA-725F/MM-700F Off.



- Push and hold the input select switches 2 and 3 under Zone 1 and restart the MA-725F/MM-700F.



- The default IP address of the unit has been changed to 192.168.14.1.
- Use this IP address to reconnect to the MA-725F/MM-700F through your browser.