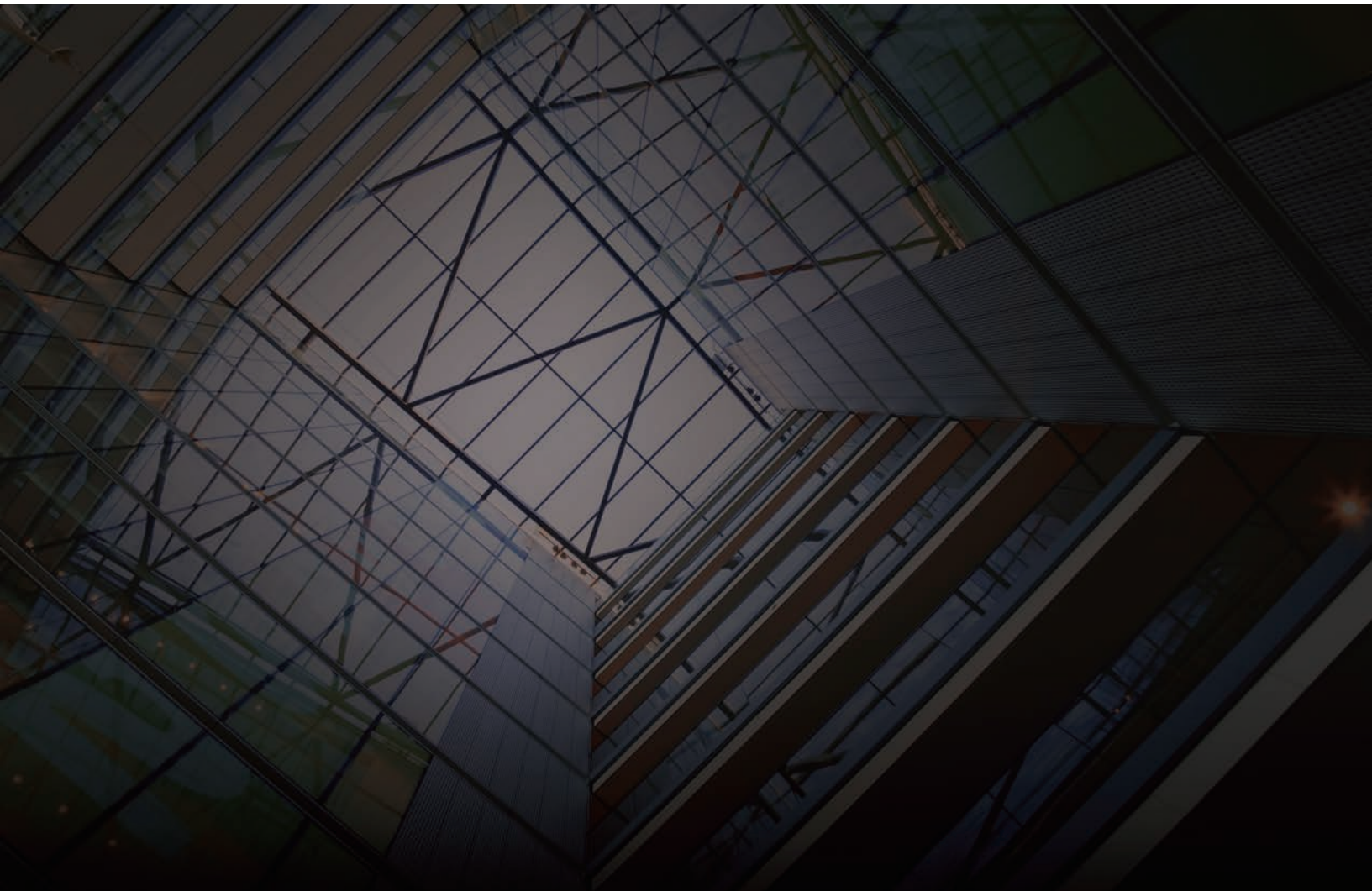


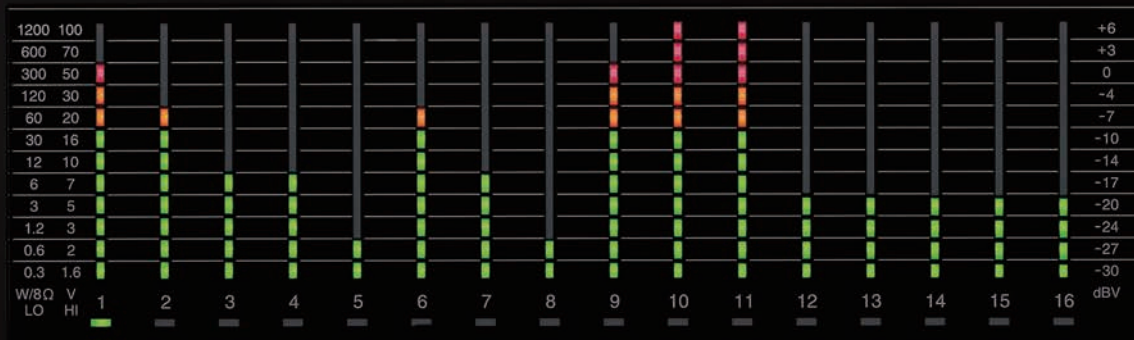


# 16 Channel Audio Monitor Panel

## MP-16



Essential Piece of Your PA System



# MP-16

MP-16 is a professional audio monitor panel, which is designed to monitor audio signals within a PA system visually and aurally. It is an essential piece to complete a rack-assembled PA system for supporting reliable system installation, daily services operations, periodical maintenance services and emergency trouble shootings.

## Key Features

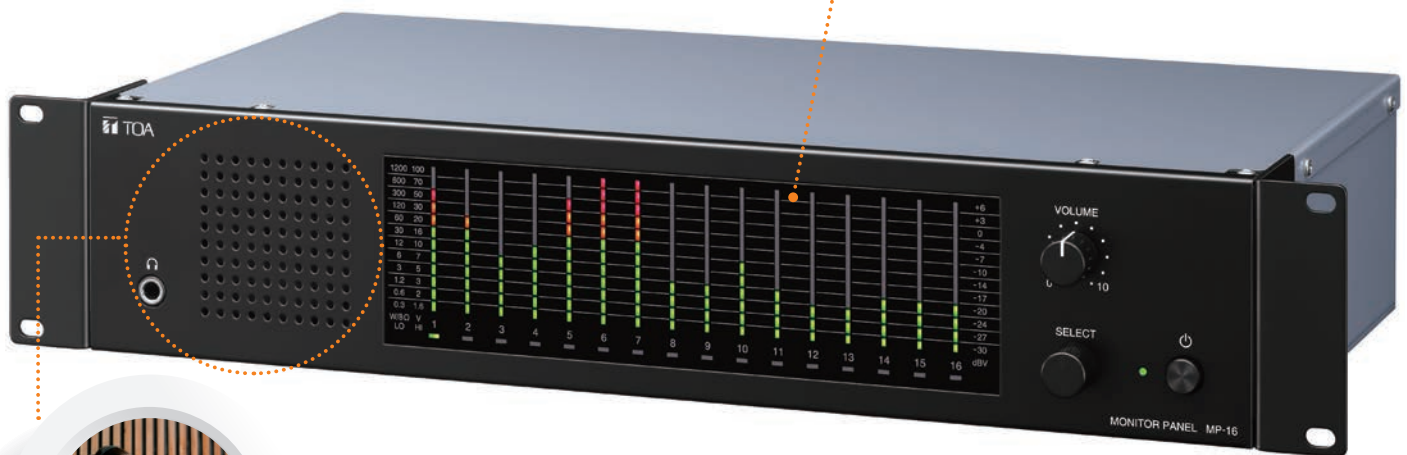
### Flexible Input Signals

Each input of 16 channels supports:

- Line level (+6dB)
- Low-z speaker line (Max. 1200W /8Ω)
- Hi-z speaker line (Max. 100V supporting 25/70/100V)

### Visual Monitoring

Independent LED meters are available for all 16 channels to visually monitor each audio signal level



### Aural Monitoring

1 audio signal out of the 16 channels can be aurally monitored by:

- Built-in speaker / -Optional headphones

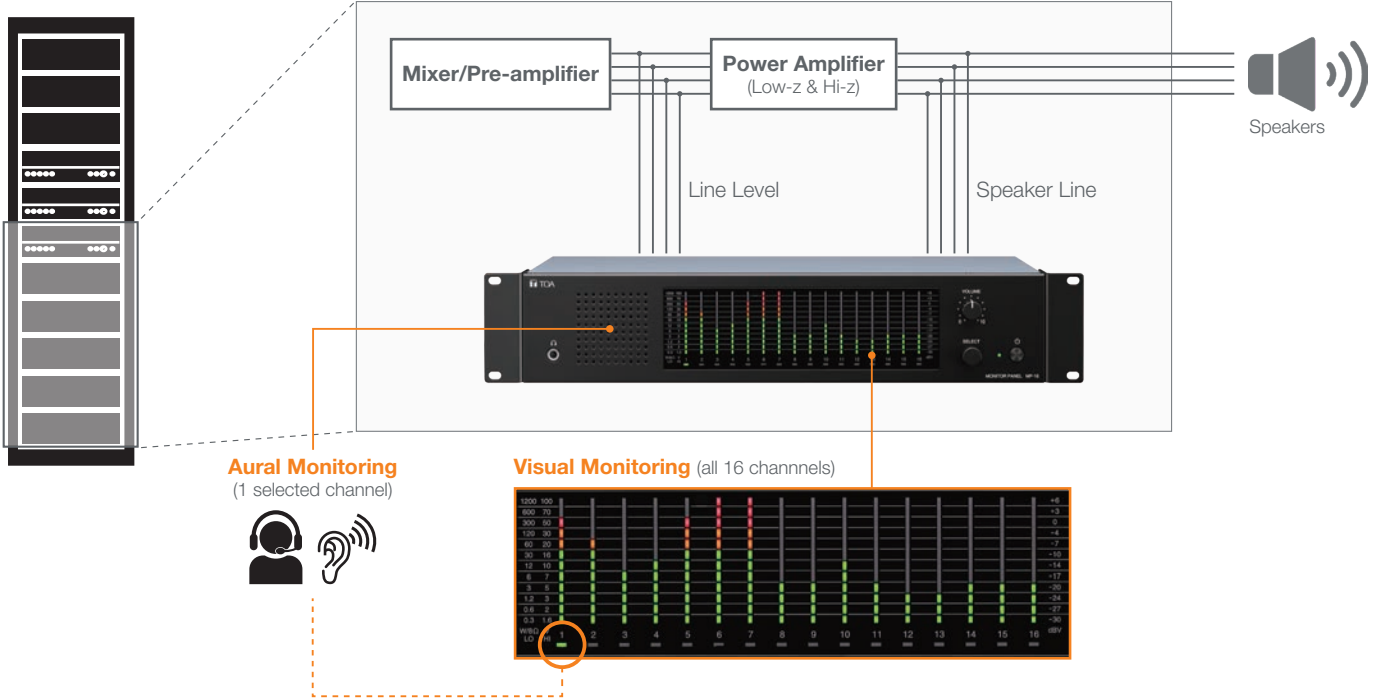
### Easy Rack Mounting

Rack mounting hardware is pre-assembled to be quickly mounted on an EIA standard rack (2 unit size)

### Direct DC24V Power Input

In addition to a dedicated AC adapter input, direct DC24V input terminal is also available for emergency battery power operation in conjunction with a Voice Evacuation System.

# System Diagram



# Applications



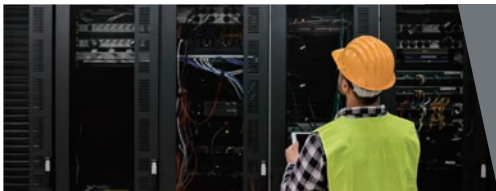
## 01. Initial System Installation

Ensure that audio signals are active to complete system installation and configuration process.



## 02. Daily Service Operations

The Built-in monitor speaker delivers live audio sounds in the control room.



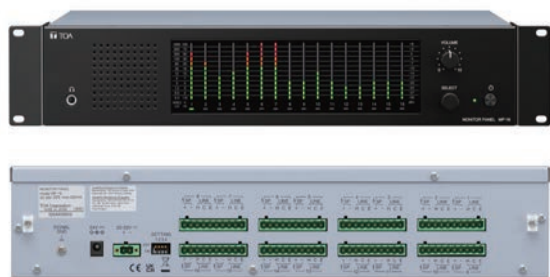
## 03. Periodical Maintenance Services

Visual and aural monitoring capability supports quick and secure audio system maintenance services.



## 04. Troubleshootings

Finds out the nature of the problem by checking audio signals to resume the system operation.



- 16 channels audio monitoring
- Visual monitoring with 12-segments LED meters
- Aural monitoring by built-in speaker and optional headphones
- A variety of input capacity: line level, low-z speaker lines and 25/70/100V hi-z speaker lines
- EIA standard rack mounting (2 unit size)
- Dedicated AC adapter input and direct DC24V input terminal

## Specifications

	MP-16
Power Source	Supplied from an external 24 V DC (20-33 V) power supply, Removable terminal block (2 pins) or AC adapter AD-246 (option)
Maximum Current Consumption	520 mA
Input	High impedance speaker: Max. 100 V Low impedance speaker: Max. 1200 W ( 8 Ω) Line: +6 dB ( *1)
Output	Speaker Output: Max. 3 W Headphone Output: 8 Ω
Level Display	Meter: 12-segment LED meter x16 Level Indications: 1.6 - 100 V ( High impedance speaker) 0.3 - 1200 W (Low impedance speaker) -30 to +6 dB ( *1) (Line)
Operating Temperature	0 °C to +40 °C (32 °F to 104 °F)
Operating Humidity	90 %RH or less ( no condensation)
Finish	Panel: Pre-coated steel plate, black, 30 % gloss Case: Surface-treated steel plate
Dimensions	482 (W) x 88.4 (H) x 240.8 (D) mm (18.98" x 3.48" x 9.48")
Weight	3.9 kg (8.6 lb)
Accessory	Removable terminal plug (10 pins, input terminal) ... 8, Removable terminal plug (2 pins, power supply) ... 1, Rack mounting screw ... 4
Option	AC adapter: AD-246

( \*1) 0 dB = 1 V