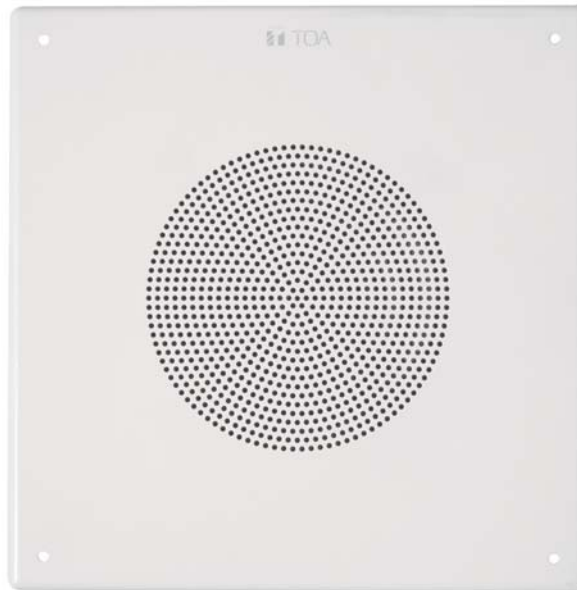




# PC-580S Square Ceiling Mount Speaker



## Square Ceiling Speakers for General Paging

TOA's PC-580S is designed to fill the need for a high-performance, cost effective ceiling speaker for use in general paging and back ground music requirements. The PC-580S can easily be installed into retrofit projects.

### Features:

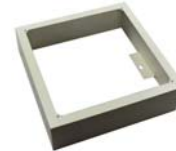
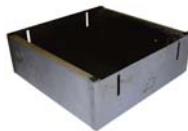
- 8" in-ceiling speaker for high-quality paging applications
- Cost effective design makes this speaker ideal for projects requiring large quantities
  - 25V & 70V transformer taps up to 5W
- Fits standard ceiling-speaker template (PC-671R and others). Perfect for retrofits
  - Unique "monocoque" design provides better structural integrity
- Optional Q-BB-580S or Q-BB-580W back-box for use in ceiling plenums

# PC-580S Square Ceiling Speaker



		PC-580S
Rated Input		10W (speaker), 5 W (transformer, 70.7 V line and 25 V line)
Rated Impedance	70.7 V line	20 K (0.25 W), 10K (0.5W), 5K (1 W), 2.5 K (2 W), 1 K (5 W) Ohms
	25 V line	2.5 K (0.25 W), 1.25 K (0.5 W), 625 (1 W), 312.5 (2 W), 125 (5 W) Ohms
Sensitivity		97 dB
Frequency Response		50 - 16.5 KHz
Speaker Component		200 mm (8") dual cone type
Magnet Size		Dia. 80 (3.15") x dia. 32 (1.26") x 12 (0.47") mm
Magnet Weight		272g (10 oz)
Flux Density		11,900 gauss
Dimensions of Fixing Hole		Dia. 203.2 mm (8.00")
Finish		Baffle: Steel plate, white Grille: Steel plate, white
Dimensions		318 x 318 x 84.5 mm
Weight		1.74 kg (3.84 lbs)
Accessory		Mounting screw (M 5 x 38 mm) x 4; Wire nut x 2
Option		Flush mount back box: Q-BB-580S Surface back box: Q-BB-580W

# PC-580S Series Back Boxes



	Q-BB-580S	Q-BB-580W
Finish	Galvanneal (satin-coat) steel construction, unpainted, anti-resonance spray coating applied to the interior of the enclosure	Commercial quality steel construction, powder-coated white, paint, open-back enclosure
Dimensions	11-3/4" x 11-3/4" square enclosure, 4" deep	12-7/8" x 12-7/8" square enclosure, 4" deep
Weight	1.30 kg (2.86 lbs)	1.31 kg (2.88 lbs)
Knockouts	Four "2-way" 1/2"-3/4" knock-outs at 90 degrees, 2" from back slots for use with channels	--
Compatible Speaker	PC-580S	