



SQUARE SURFACE MOUNT BACK BOX, WHITE

Q-BB-580W

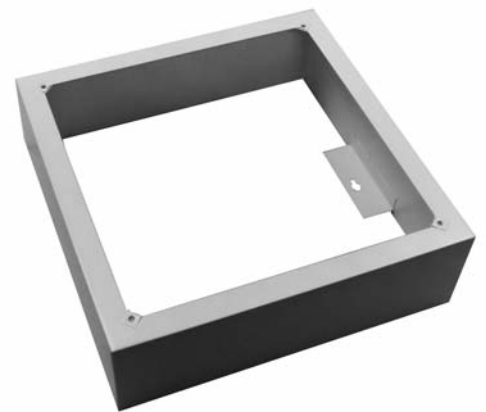
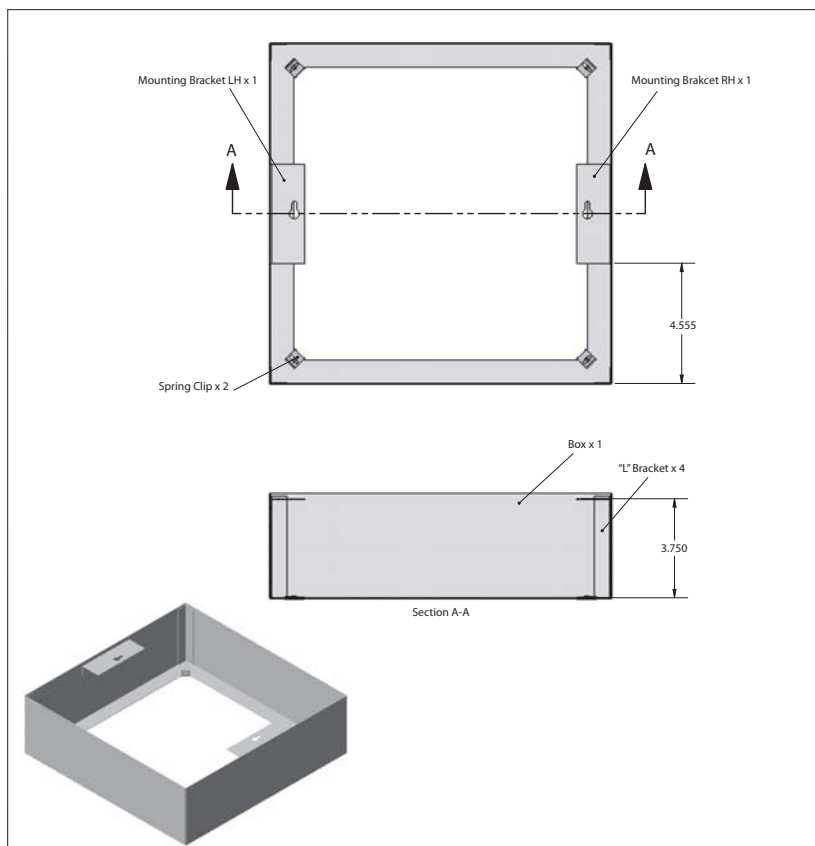
DESCRIPTION:

The Q-BB-580W White Square Surface Mount Back Box is a metal case that can be attached to TOA's PC-580S flush-mount ceiling speaker for exposed applications. The Q-BB-580W will allow the use of TOA's PC-580S ceiling speaker in a space where a common speaker/back can combinations will not fit due to depth considerations.

SPECIFICATIONS:

| | |
|------------|--|
| Enclosure | Commercial quality steel construction, Powder-coated white paint, Open-back enclosure |
| Dimensions | 12-7/8" x 12-7/8" square enclosure, 4" deep |

APPEARANCE:



TOA Canada Corporation
www.TOAcanda.com

Specifications are subject to change without notice. (version 2 06-2016)